

Model HDMS 0,4 | 0,6 | 0,8 Grapples

BMF-6502147100

Aftermarket Fuchs® Grapple Cyl 70x50-335mm

High strength and rugged cylinder is rated at 5000psi. 70mm bore x 335mm stroke and 50mm diameter rod. Spherical bearings on cylinder and rod ends. Aftermarket replacement for Fuchs® grapple cylinder 6502147100 & 5362670010. Used on Fuchs® HDMS 0,4 / 0,6 / 0,8 grapples*. Includes protective steel shield. *Some 0,8 grapples may be equipped with an alternative 5577661352 cylinder. Users must check cylinders installed on grapple and use matching part number.



BMF-0502147035

Aftermarket Fuchs® Grapple Cylinder Cover (Protection Tube)

Used with BMF-1007030744 tine bolt. Aftermarket replacement for 1212341016. Used on HDMS 0,4 / 0,6 / 0,8 grapples.



BMF-6502147003

Aftermarket Fuchs® Grapple Cylinder Barrel Assembly

Replacement Fuchs® grapple cylinder barrel. Used on cylinder P/N 6502147100/5362670010.



BMF-0502147111

Aftermarket Fuchs® Grapple Cylinder Rod Assembly

Replacement Fuchs® grapple cylinder rod. Used on cylinder P/N 6502147100/5362670010.



BMF-1976999322

Aftermarket Fuchs® Grapple Cylinder Seal Kit

Contains all the seals required for a 6502147100 or 5362670010 cylinder rebuild. Aftermarket replacement for 1976999322.



BMF-0502147017

Aftermarket Fuchs® Gland
Replacement steel gland. Used on cylinder BMF-6502147100.



BMF-1456622360

Aftermarket Fuchs® C-clip
Replacement c-clip used to secure spherical bearing on cylinder BMF-6502147100.



BMF-1008341124

Aftermarket Fuchs® Gland Bolt
Single replacement gland bolt. Used on cylinder BMF-6502147100.



BMF-1018317030

Aftermarket Fuchs® Cover Bolt
Single replacement bolt used on protective shield of cylinder BMF-6502147100.



BMF-0502106015

Aftermarket Fuchs® Piston
Replacement steel piston. Used on cylinder BMF-6502147100.



BMF-0502079025

Aftermarket Fuchs® Bushing
Single replacement bushing used on protective shield of cylinder BMF-6502147100. Used with BMF-1018317030.



BMF-1607010008

Aftermarket Fuchs® Tine zerk
Replacement grease nipple used on tine and cylinder. Aftermarket replacement for 1607010008. Used on HDMS 0,4 / 0,6 / 0,8 grapples.



BMF-1950000438

Aftermarket Fuchs® Grapple Cylinder 40/68 Spherical Bearing
Heavy duty spherical bearing. Used on BMF-6502147100 cylinder.



Universal Replacement Parts for Fuchs® cont.

BMF-0050006011

Aftermarket Fuchs® Tine Pin (Double Bolt Version)

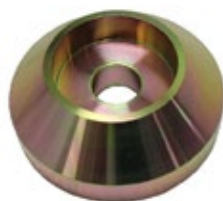
Hardened steel tine pin (Double Bolt Version). Used with BMF-0050006012 & BMF-1007030042. Aftermarket replacement for 0050006011. Used on HDMS 0,4 / 0,6 / 0,8 grapples.



BMF-0050006012

Aftermarket Fuchs® Tine Pin Cover (Double Bolt Version)

Steel cover used with BMF-0050006011. Aftermarket replacement for 0050006012. Used on HDMS 0,4 / 0,6 / 0,8 grapples.



BMF-1007030042

Aftermarket Fuchs® Tine Bolt (short version)

Bolt used to secure BMF-0050006011 tine pin. Two bolts used per pin. Aftermarket replacement for 1007030042. Used on HDMS 0,4 / 0,6 / 0,8 grapples.



BMF-6090066630

Aftermarket Fuchs® Tine Pin (Single Bolt Version)

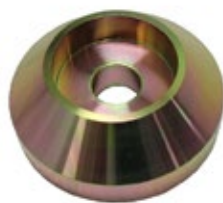
Hardened steel tine pin (Single Bolt Version). Used with BMF-0090066632 & BMF-1007030744. Aftermarket replacement for 6090066630. Used on HDMS 0,4 / 0,6 / 0,8 grapples.



BMF-0090066632

Aftermarket Fuchs® Tine Pin Cover (Single Bolt Version)

Steel cover used with BMF-6090066630. Aftermarket replacement for 0090066632. Used on HDMS 0,4 / 0,6 / 0,8 grapples.



BMF-1007030744

Aftermarket Fuchs® Tine Bolt (long version)

Bolt used to secure BMF-6090066630 tine pin. One bolt used per pin. Aftermarket replacement for 1007030744. Used on HDMS 0,4 / 0,6 / 0,8 grapples.



BMF-1212341016

Aftermarket Fuchs® Tine Hexagon Nut

Used with BMF-1007030744 tine bolt. Aftermarket replacement for 1212341016. Used on HDMS 0,4 / 0,6 / 0,8 grapples.



BMF-0052006003

Aftermarket Fuchs® Upper & Lower Cylinder Pin (L=160 mm)

Hardened steel cylinder pin. Aftermarket replacement for 0052006003. Used on HDMS 0,4 / 0,6 / 0,8 grapples.



BMF-5381620439

Aftermarket Fuchs® Clamping Bush

Hardened steel bush. Aftermarket replacement for 5381620439. Used on HDMS 0,4 / 0,6 / 0,8 grapples.



BMF-5557206032

Aftermarket Fuchs® Tine Bushing

Hardened steel tine bushing. Aftermarket replacement for 5557206032. Used on HDMS 0,4 / 0,6 / 0,8 grapples.



Universal Replacement Parts for Fuchs® cont.

BMF-5710656326

Aftermarket Fuchs® Rotary Union Seal Kit

Includes x5 two-piece rotary seals, x1 dirt wiper and x2 o-rings. Used on series HDMS 0.4 / 0.6 / 0.8 m³ grapple rotary unions.



BMF-5710656371

Aftermarket Fuchs® Motor Seal Kit

Includes x2 energized seals and x2 o-rings. Used on series HDMS 0.4 / 0.6 / 0.8 m³ grapple motors.



BMF-5754657800

Aftermarket Fuchs® Tine Tip

Cast steel weld on tine tip. Hardened, wear resistant steel for maximum wear life. Aftermarket replacement for 5754657800. Fits HDMS 0,4 / 0,6 / 0,8 grapples.

